

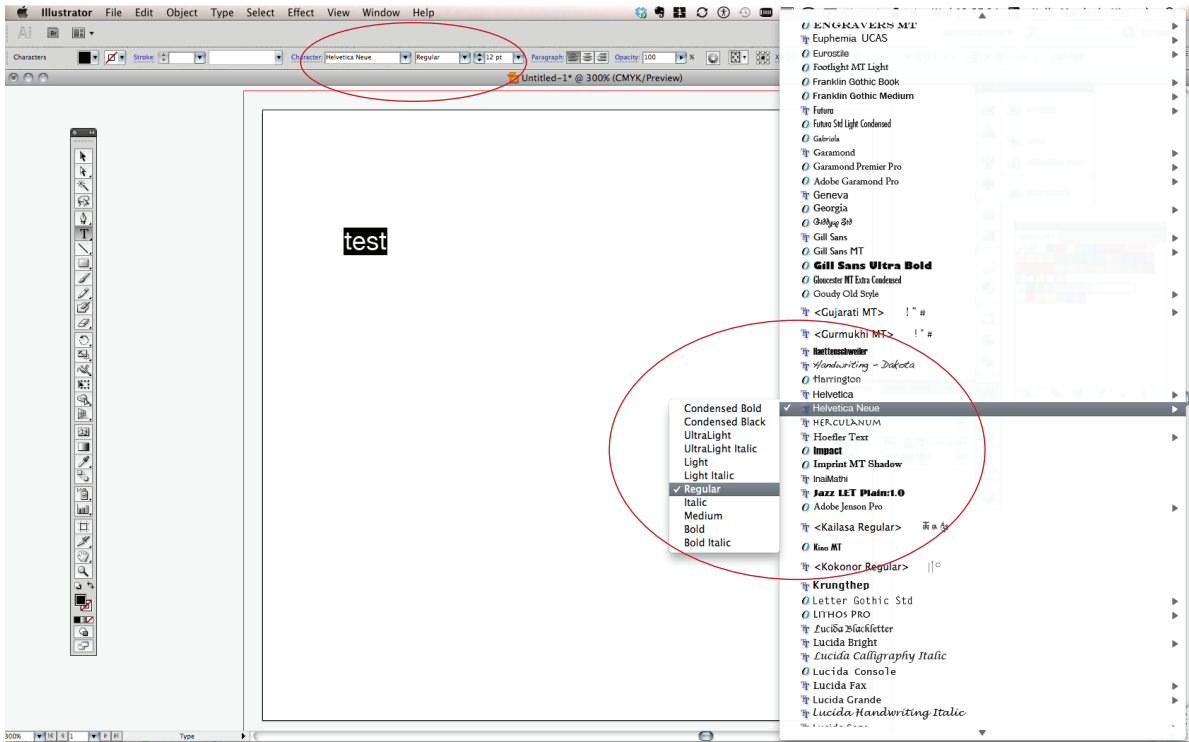
NOTES: ADOBE ILLUSTRATOR: BASIC TYPE & BLEEDS

TYPE TOOL & BASIC CONTROLS



Hit the letter “T” on your keyboard to bring up your type tool.
(or select the “T” icon in your tools panel)

Once your type tool is selected, click once on the artboard, and type options will appear in the top control panel. From here, you can quickly adjust the point size, choose different typefaces, and adjust the paragraph alignment. You can also use the Character Palette (CMD+T) and Paragraph Palette (OPT+CMD+T) to fine-tune your type.



SINGLE-LINE VS. PARAGRAPH

Clicking anywhere and typing creates an “unwrapped” single line of text.

Alternatively, you can also click and drag with your type tool to create a type box on the artboard to contain paragraphs or blocks of text.

NOTES: ADOBE ILLUSTRATOR: BASIC TYPE & BLEEDS

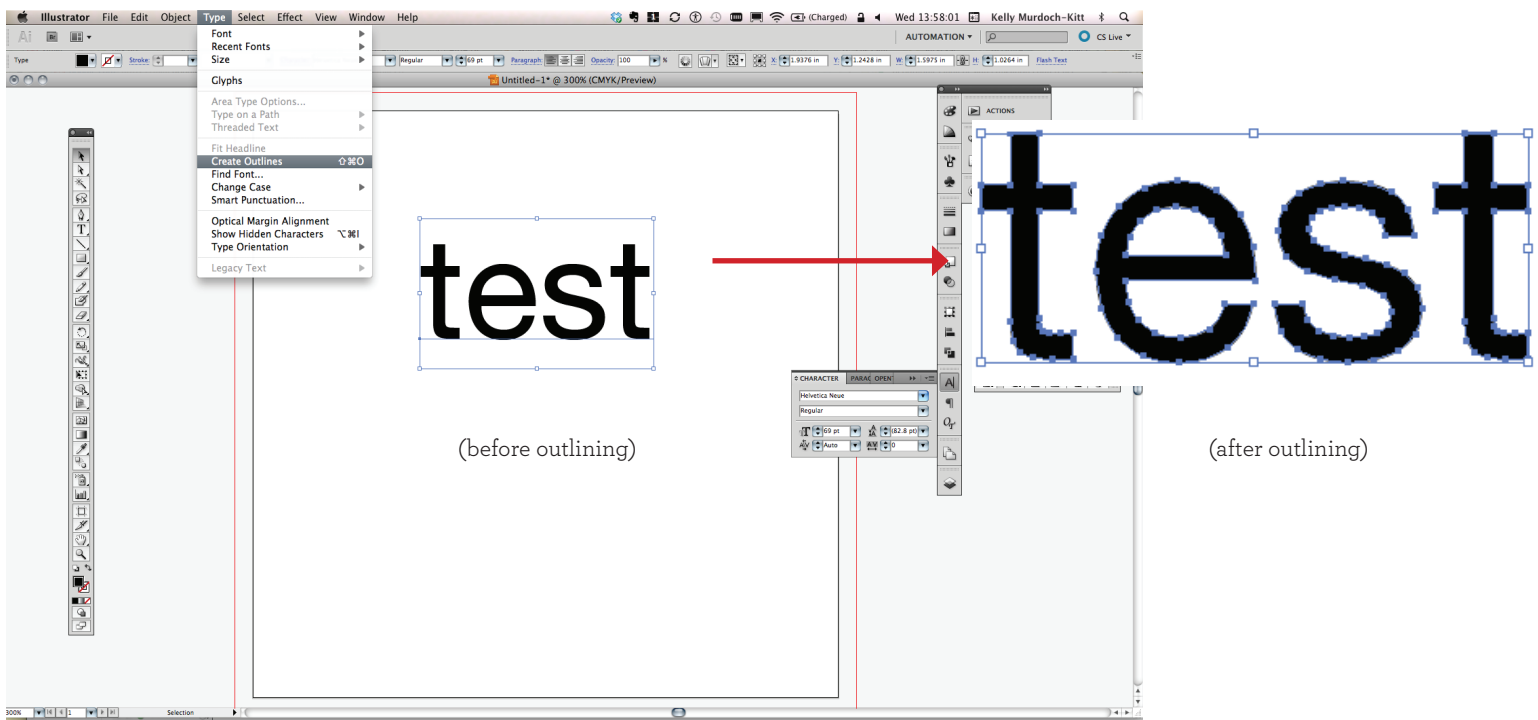
OUTLINING TYPE

To OUTLINE text (which changes it into an object), change to your black arrow selection tool (V). Click anywhere on the artboard to deselect your type, then click once on it. You should see a blue box around the outside of the whole word (or block of text), which means it is selected.

Once selected, CMD+SHIFT+O will convert each letter to OUTLINES.
(also under Type > Create Outlines)

Outlined type will have blue dots around each letter (see image below)

Note the the outlined letters are grouped by default, but unlike other grouped objects (like those produced by the Pathfinder options), you must UNGROUP (CMD+SHIFT+G) the letters before you can modify them individually.



SCALE

PROPORTIONALLY

As with regular shapes, holding the SHIFT key will maintain the proportions as you scale the letters.

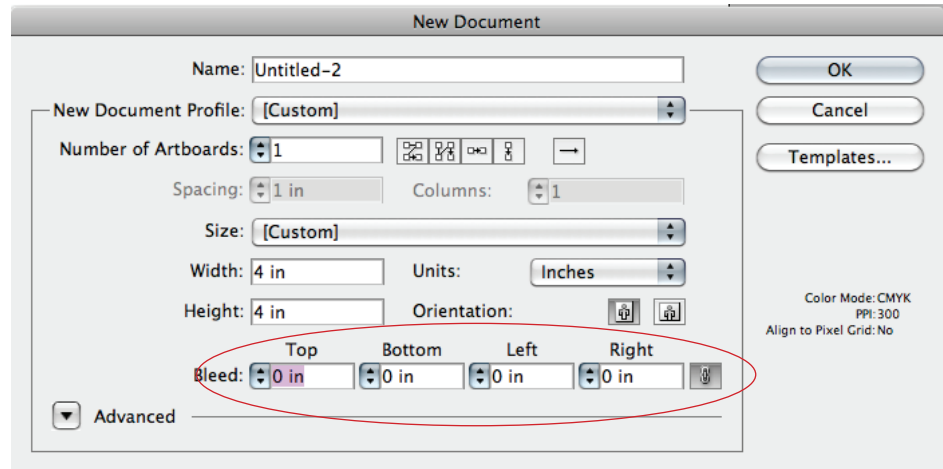
NOTES: ADOBE ILLUSTRATOR INTRODUCTION

ABOUT BLEED(S)

“Bleed” or “bleeds” are an important aspect of print design. They are a framing device that enables an image to appear as if it extends all the way to the edge of a page after printing and trimming. Without bleeds, there would be blank margins around everything, which would be such a sad world.

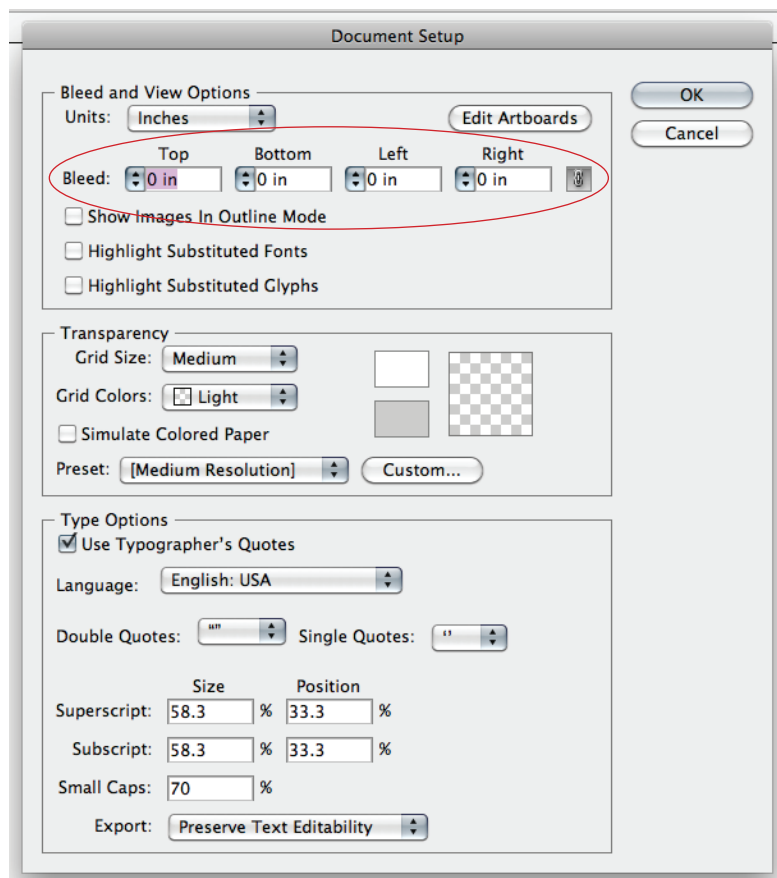
SETTING UP A BLEED

You can set up a bleed when you first create your document:



By default, Illustrator applies the same bleed to all sides of the document, but you can deselect the chain link icon on the far right and assign different bleed measurements (or no bleed) for the different edges of each artboard.

You can also set up a bleed after you've created a document, which is what we did in class. Go to FILE > Document Setup, and it will give you a dialog that looks like this:



NOTES: ADOBE ILLUSTRATOR INTRODUCTION

PRINTING

Now that you've set up your lovely bleeds and have made sure that anything close to the edges extends all the way to the red lines around your artboard, it's time to print!

